

# 680 Rhode Island Ave, NE

Washington DC

## PUD Application

© 2015 SK&I Architectural Design Group, LLC.



PROPERTY OWNER  
B + R Associates LP

DEVELOPMENT TEAM

DEVELOPER / APPLICANT  
MRP Rhode Island Avenue Investors LLC

LAND USE COUNSEL  
Goulston & Storrs

ARCHITECT  
SK&I Architectural Design Group, LLC

CIVIL ENGINEER  
Bowman Consulting

TRAFFIC CONSULTANT  
Gorove / Slade

LANDSCAPE ARCHITECT  
Oculus

DRAWING INDEX

|         |      |                 |
|---------|------|-----------------|
| STAGE 1 | 0.00 | Cover Sheet     |
|         | 0.01 | Sheet List      |
|         | 0.02 | Location Map    |
|         | 0.03 | Surveyor's Plat |
|         | 0.04 | Site Plan       |
|         | 0.05 | Context         |
|         | 0.06 | Context         |

|         |       |   |
|---------|-------|---|
| STAGE 1 | L1.01 | Illustrative Site Plan                        |
|         | L1.02 | Public Framework Diagram                      |
|         | L1.03 | Vehicular Circulation                         |
|         | L1.04 | Pedestrian Circulation                        |
|         | L1.05 | Bicycle Circulation                           |
|         | L1.06 | Grading Plan                                  |
|         | L1.07 | Metropolitan Branch Trail Improvements        |
|         | L1.08 | Adjacent Property Connection Detail 1         |
|         | L1.09 | Adjacent Property Connection Detail 2         |
|         | L1.10 | Adjacent Property Connection Character Images |
|         | L1.11 | Streetscape Sections                          |
|         | L1.12 | Streetscape Sections                          |
|         | L1.13 | Streetscape Sections                          |
|         | L1.14 | Streetscape Sections                          |
|         | L1.15 | Streetscape Sections                          |
|         | L1.16 | Green Area Ratio Calculations                 |

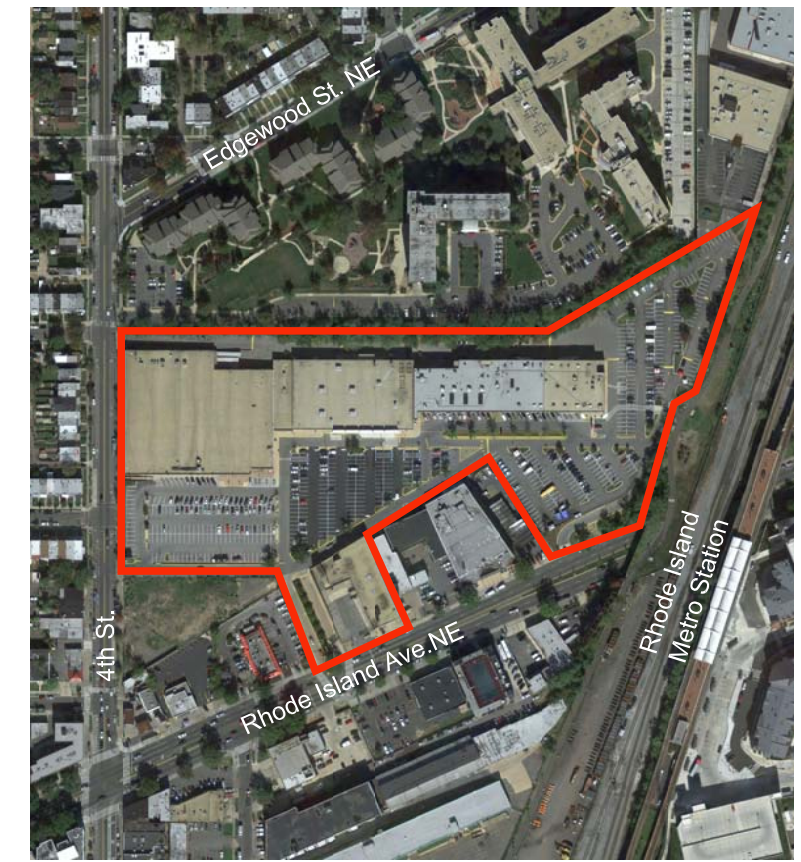
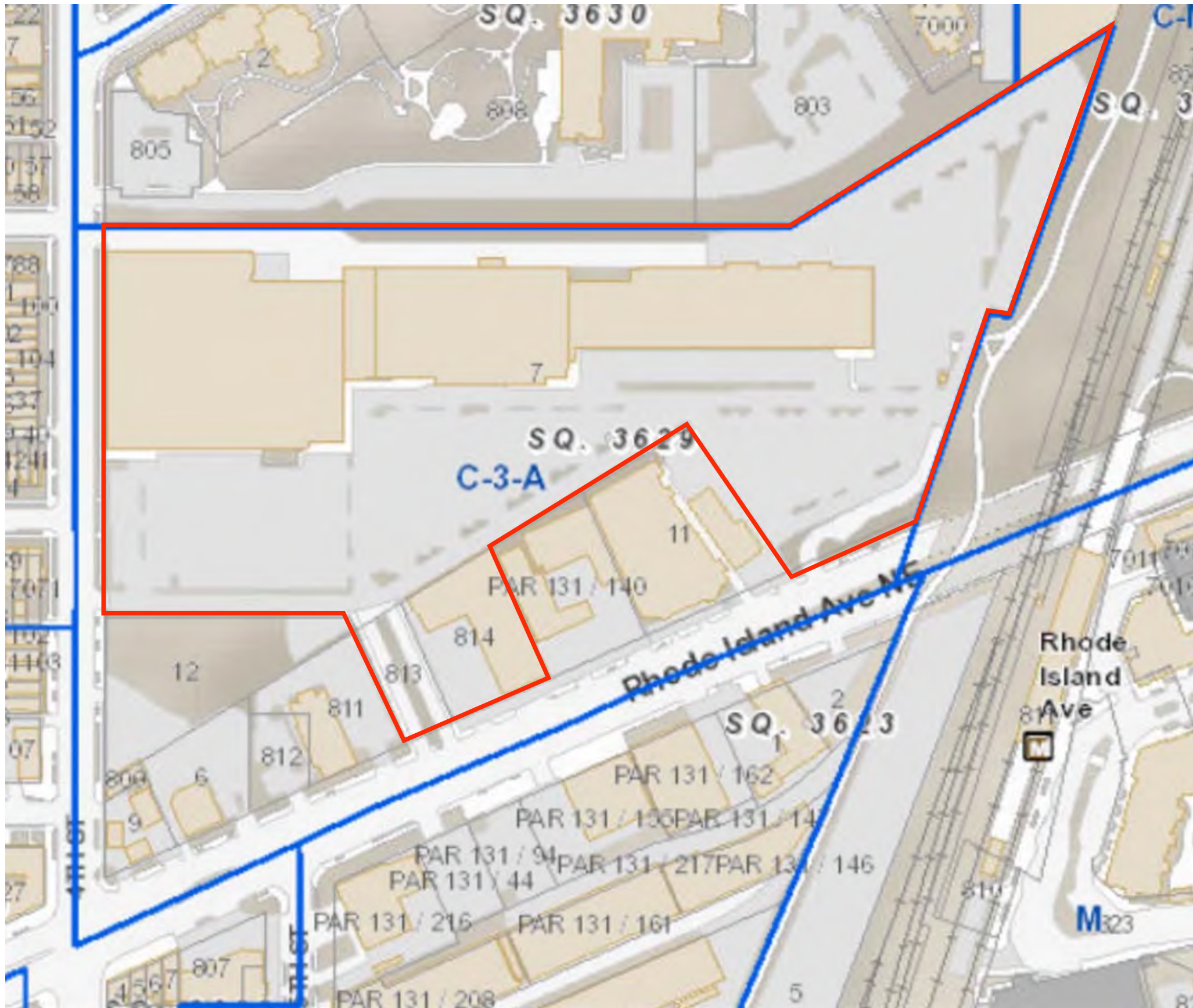
|         |       |  |
|---------|-------|--|
| STAGE 2 | L2.01 | Illustrative Site Plan-Block 1 Interim Condition |
|         | L2.02 | Grading Plan - Block 1 Interim Condition         |
|         | L2.03 | Site Plan Enlargement                            |
|         | L2.04 | Landscape Elements - Plaza                       |
|         | L2.05 | Landscape Elements - Hardscape                   |
|         | L2.06 | Landscape Elements - Site Furnishings            |
|         | L2.07 | Architectural Elements - Temporary Installation  |
|         | L2.08 | Planting Palette - Street Trees                  |
|         | L2.09 | Green area Calculations - Block 1                |

|         |       |                                     |
|---------|-------|-------------------------------------|
| STAGE 2 | 0.10  | Development Data                    |
|         | 0.11  | Block 1A and 1B Affordable Unit Mix |
|         | 0.21  | Site Aerial                         |
|         | 0.22  | Site Aerial                         |
|         | 0.23  | Site Aerial                         |
|         | 0.24  | Site Aerial                         |
|         | 0.30  | Site Phasing Plan                   |
|         | 0.40  | Block Measuring Point Plan          |
|         | 1.001 | Block 1 Development Data            |
|         | 1.101 | Block 1A and 1B Garage Plan Level 3 |
|         | 1.102 | Block 1A and 1B Garage Plan Level 2 |
|         | 1.103 | Block 1A and 1B Garage Plan Level 1 |
|         | 1.104 | Block 1A and 1B 1st Floor Plan      |
|         | 1.105 | Block 1A and 1B 2nd Floor Plan      |
|         | 1.106 | Block 1A and 1B 3rd-7th Floor Plan  |
|         | 1.107 | Block 1A and 1B Roof Plan           |
|         | 1.201 | Perspective                         |
|         | 1.202 | Perspective                         |
|         | 1.203 | Perspective                         |
|         | 1.204 | Perspective                         |
|         | 1.221 | Block 1A Elevations                 |
|         | 1.222 | Block 1A Elevations                 |
|         | 1.223 | Block 1A Elevations                 |
|         | 1.224 | Block 1A Elevations                 |
|         | 1.225 | Block 1A Elevations                 |
|         | 1.226 | Block 1A Elevations                 |
|         | 1.227 | Block 1B Elevations                 |
|         | 1.228 | Block 1B Elevations                 |
|         | 1.229 | Block 1B Elevations                 |
|         | 1.230 | Block 1B Elevations                 |
|         | 1.231 | Block 1B Elevations                 |
|         | 1.232 | Block 1B Elevations                 |
|         | 1.233 | Block 1B Elevations                 |
|         | 1.234 | Building Signage                    |
|         | 1.301 | Building 1A Sections                |
|         | 1.302 | Building 1B Sections                |
|         | 1.501 | Block 1A Facade Details             |
|         | 1.502 | Block 1A Facade Details             |
|         | 1.503 | Block 1B Facade Details             |
|         | 1.504 | Block 1B Facade Details             |
|         | 1.505 | Block 1A Architectural Elements     |
|         | 1.506 | Block 1A Architectural Elements     |
|         | 1.507 | Block 1B Architectural Elements     |
|         | 1.508 | Block 1B Architectural Elements     |
|         | 1.509 | Material Options                    |
|         | 1.520 | Precedents                          |
|         | 1.521 | Precedents                          |

|         |       |                             |
|---------|-------|-----------------------------|
| STAGE 1 | 2.001 | Block 2 Development Data    |
|         | 2.101 | Block 2 Garage Plan Level 1 |
|         | 2.102 | Block 2 First Floor Plan    |
|         | 2.103 | Block 2 2nd Floor Plan      |
|         | 2.104 | Block 2 3rd-7th Floor Plan  |
|         | 2.105 | Block 2 Roof Plan           |
|         | 2.301 | Block 2 Sections            |
|         | 3.001 | Block 3 Development Data    |
|         | 3.101 | Block 3 Garage Plan Level 3 |
|         | 3.102 | Block 3 Garage Plan Level 2 |
|         | 3.103 | Block 3 Garage Plan Level 1 |
|         | 3.104 | Block 3 First Floor Plan    |
|         | 3.105 | Block 3 2nd Floor Plan      |
|         | 3.106 | Block 3 3rd-7th Floor Plan  |
|         | 3.107 | Block 3 Roof Plan           |
|         | 3.301 | Block 3 Sections            |
|         | 4.001 | Block 4 Development Data    |
|         | 4.101 | Block 4 Garage Plan Level 2 |
|         | 4.102 | Block 4 Garage Plan Level 1 |
|         | 4.103 | Block 4 First Floor Plan    |
|         | 4.104 | Block 4 2nd Floor Plan      |
|         | 4.105 | Block 4 3rd-7th Floor Plan  |
|         | 4.106 | Block 4 Roof Plan           |
|         | 4.301 | Block 4 Sections            |
|         | 5.001 | Block 5 Development Data    |
|         | 5.101 | Block 5 Garage Plan Level 3 |
|         | 5.102 | Block 5 Garage Plan Level 2 |
|         | 5.103 | Block 5 Garage Plan Level 1 |
|         | 5.104 | Block 5 First Floor Plan    |
|         | 5.105 | Block 5 2nd Floor Plan      |
|         | 5.106 | Block 5 3rd-6th Floor Plan  |
|         | 5.107 | Block 5 7th Floor Plan      |
|         | 5.108 | Block 5 Roof Plan           |
|         | 5.301 | Block 5 Sections            |
|         | 6.001 | Block 6 Development Data    |
|         | 6.101 | Block 6 Garage Plan Level 2 |
|         | 6.102 | Block 6 Garage Plan Level 1 |
|         | 6.103 | Block 6 First Floor Plan    |
|         | 6.104 | Block 6 2nd Floor Plan      |
|         | 6.105 | Block 6 3rd-7th Floor Plan  |
|         | 6.106 | Block 6 Roof Plan           |
|         | 6.301 | Block 6 Sections            |
|         | 7.101 | Site Section                |
|         | 7.102 | Site Section                |
|         | 7.103 | Site Section                |
|         | 7.104 | Site Section                |

|         |      |   |
|---------|------|---|
| STAGE 1 | C-1  | General Notes                             |
|         | C-2  | Existing Conditions                       |
|         | C-3  | Stage 1 Overall Site Plan                 |
|         | C-4  | Stage 1 Site Plan (1 of 2)                |
|         | C-5  | Stage 1 Site Plan (2 of 2)                |
|         | C-6  | Stage 1 Overall Grading Plan              |
|         | C-7  | Stage 1 Overall Utility Plan              |
|         | C-8  | Overall Lot Area                          |
|         | C-9  | Blocks Area                               |
| STAGE 2 | C-10 | Stage 2 Site Plan                         |
|         | C-11 | Stage 2 Grading Plan                      |
|         | C-12 | Stage 2 Utility Plan                      |
|         | C-13 | Stage 2 Erosion and Sediment Control Plan |

New Sheet  
 Updated Sheet



© 2015 SK&I Architectural Design Group, LLC.







Legend

- Residential Amenity
- Residential
- Potential Retail
- Retail
- Service
- Grocery





A. The Vantage Residences



B. Metro Stairs



C. Site from Metro Stairs



D. Rhode Island Avenue Row Apartments



E. 4th and Rhode Island



F. Metro Bridge



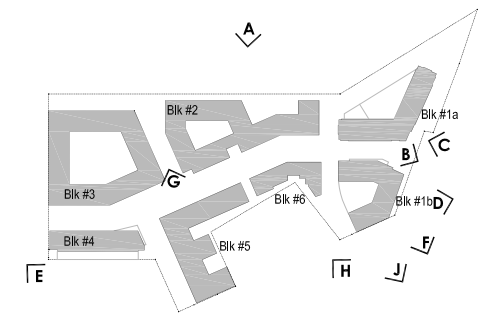
G. Existing Retail



H. Greater Mt. Calvary Holy Church



J. Silos on Rhode Island Ave.



KEY PLAN

MRP REALTY

680 Rhode Island Ave. | Washington, DC

September 28, 2015 | 0.05



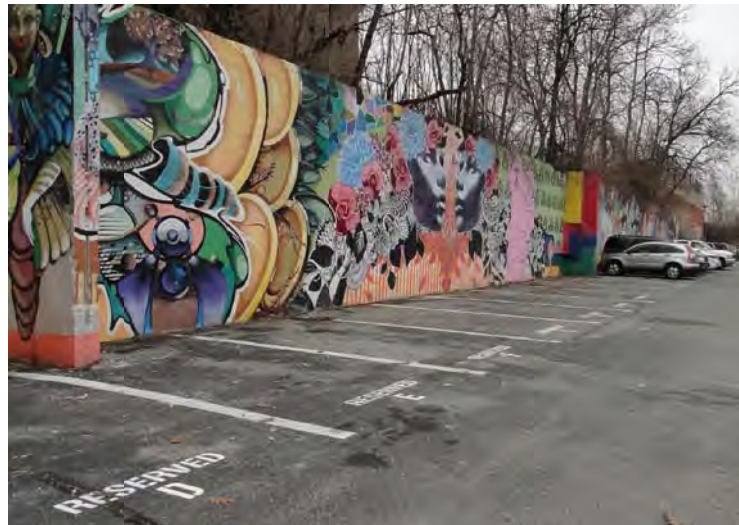
A. Metro



B. Metro Bridge



C. Metro



D. Retaining wall



E. Retaining wall

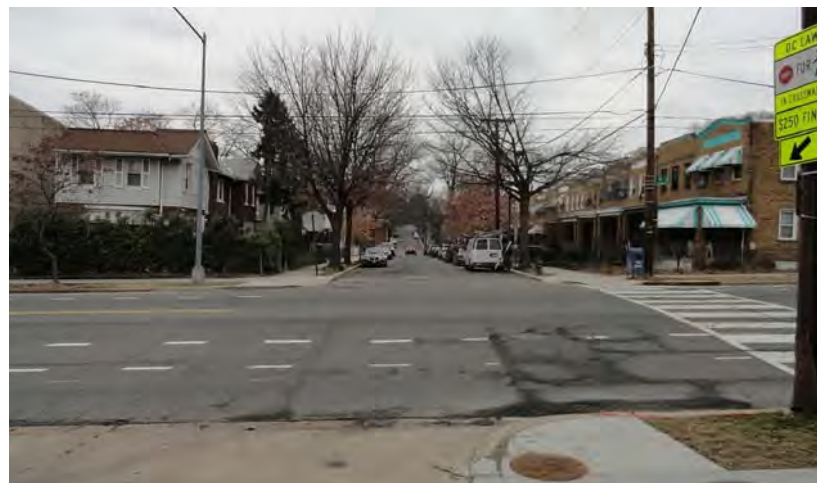


F. Retaining wall



G. Retail

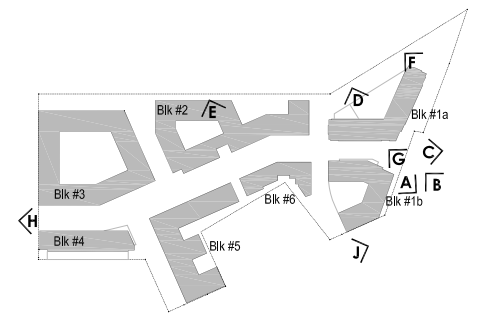
MRP REALTY



H. Adjacent Neighborhood



J. Rhode Island Ave. Underpass



KEY PLAN

680 Rhode Island Ave. | Washington, DC

Context

September 28, 2015 | 0.06

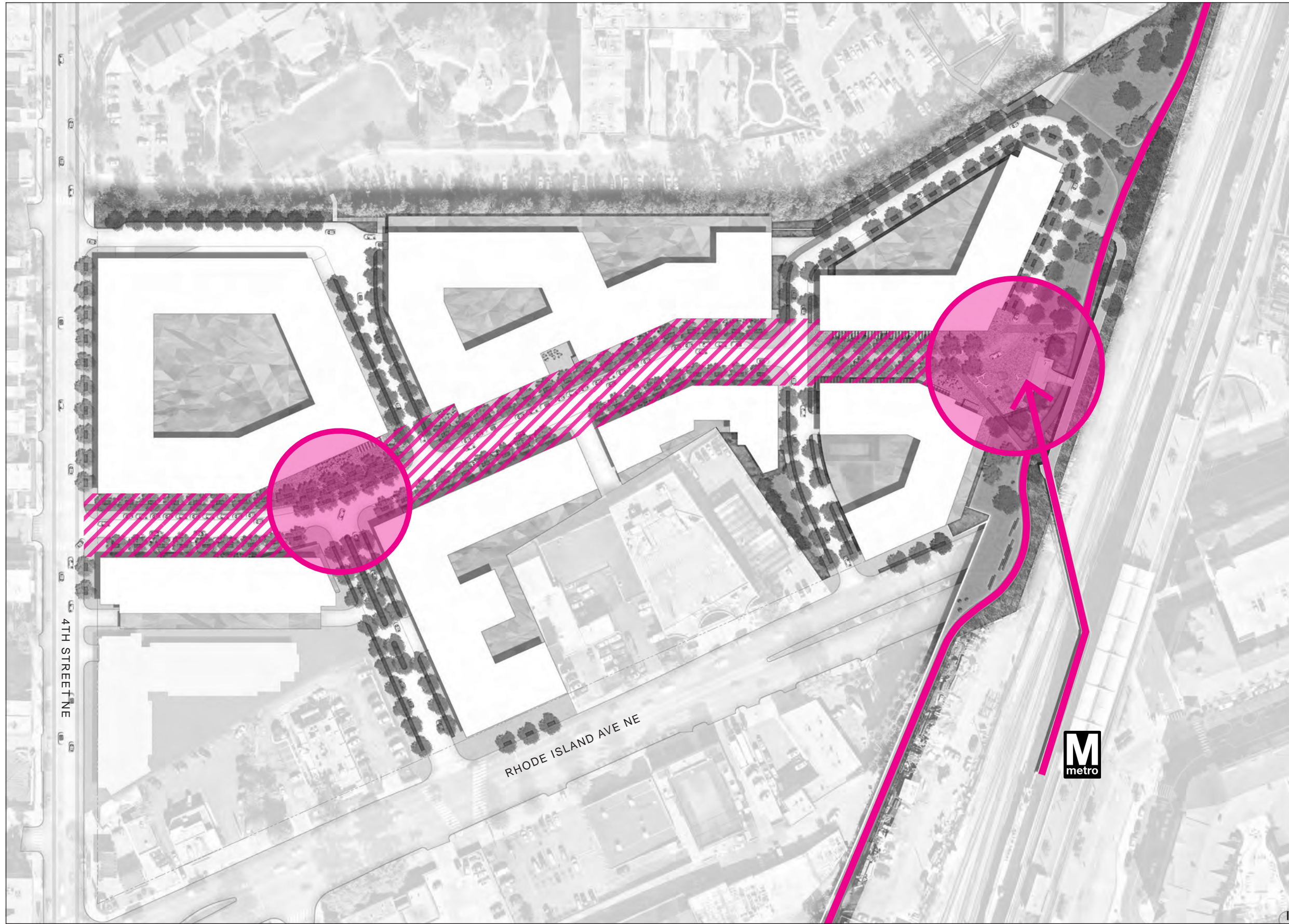


- ① RHODE ISLAND AVE. METRO STATION
- ② EXISTING PEDESTRIAN BRIDGE TO METRO
- ③ METROPOLITAN BRANCH TRAIL
- ④ PEDESTRIAN PLAZA
- ⑤ CYCLE LANES
- ⑥ EXISTING ART WALL
- ⑦ RESIDENTIAL AMENITY TERRACE
- ⑧ FLEXIBLE OPEN SPACE
- ⑨ ACCESS STAIR  
(SUBJECT TO APPROVAL BY  
ADJACENT PROPERTY OWNER)

Note: Plan for illustrative purposes only and does not reflect the exact design to be proposed






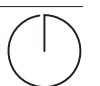


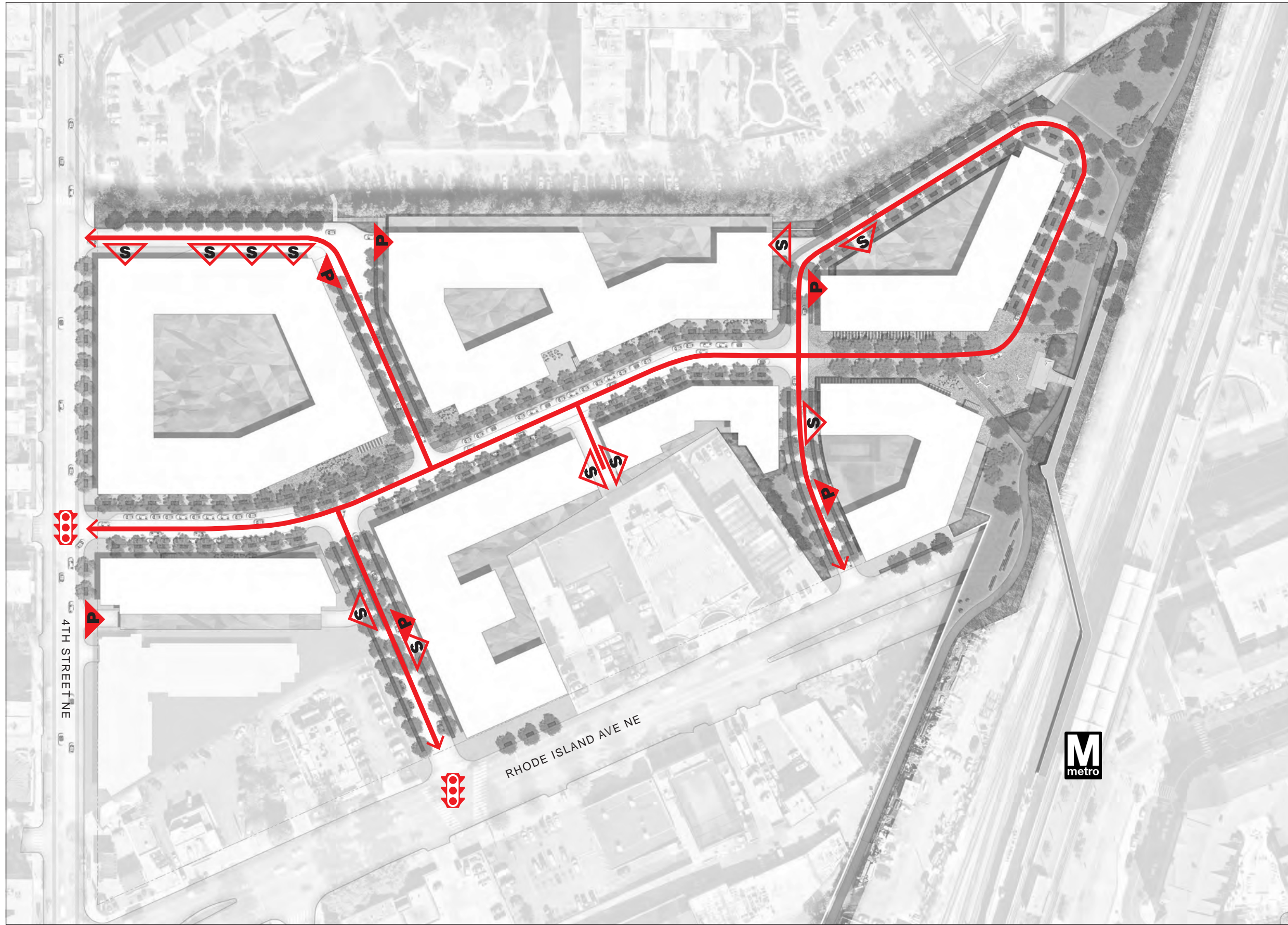


© 2015 SK&I Architectural Design Group, LLC.

LEGEND

-  Retail Street
-  Activity Node
-  Regional Connection





© 2015 SK&I Architectural Design Group, LLC.

LEGEND

- Vehicular Circulation
- Service Entry
- Parking Garage Entry
- Signalized Intersection

